

# The reliable cutter for signage, displays and packaging sample production

The Kongsberg V Series



# Finishing with the industry's most reliable table

The Kongsberg V is a cutting table that stands for value, durability, reliability, precision and ease of use at an attractive investment level.

The Kongsberg V cutters come in standard configurations for sample making, signage and display production. The Kongsberg V offers a broad selection of tools, providing quality results on a wide range of cutting, creasing, and plotting tasks. No matter what application, the Kongsberg V brings the value you are looking for.



**Rack-and-pinion drive system:** Kongsberg's rack and pinion drive system support balances raw power and the finest axis control. The result is speed, durability and strength.



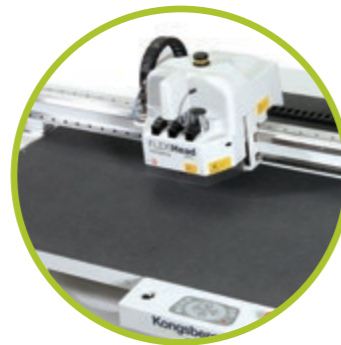
**Tool exchange:** Exchanging different tools is quick, tool-free and error-free because every insert is identified by a unique bar code.



**Ease of operation:** The Kongsberg V user interface guarantees swift and safe production.



**Tool inserts:** Insert knife tools are available for cutting all relevant materials ranging from thin paper to synthetic sheets through heavy-duty packaging and display material. The tooling selection also includes creasing, plotting and drilling tools.



**Table Mapping:** Dynamic table mapping provides real-time updates to the exact field conditions. Precise automatic z-control during finishing means less damage to the underlay.



**Sandwich steel construction:** The Kongsberg V series features the famous, rock-solid Kongsberg tabletop construction that will never warp or go out of level, even after decades of heavy use. Most Kongsberg cutting tables — thousands of them — are still in operation today.



**i-cut Vision Pro camera:** The camera system ensures highly efficient production along with simple and extremely accurate print-to-cut registration, even with print-distorted materials (available on the Sign & Display configuration.)

# Choose your Kongsberg V table

There are two kinds of Kongsberg V tables, each with their own strengths and range of applications.

## Kongsberg V for packaging sample making



The Kongsberg V for packaging is a cutting table configured for sample making, short run production of mockups and other packaging specific applications. This table is outfitted with a FLEXIHead.

The FLEXIHead offers highly accurate, powerful cutting on all flexible and thin materials such as paper, folding carton, vinyl, textile and more.

The FLEXIHead is attached to a very precise servo axis controlling the tool depth when cutting, creasing and routing. Three configurable tool stations accommodate a full range of standard tool inserts.



## Kongsberg V for signage and display production

The Kongsberg V for signage and displays comes with a MultiCUT tool head offering milling productivity and a camera system.

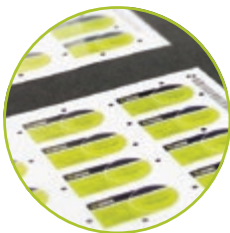
The MultiCUT combines all the tool insert options with a milling spindle up to 45.000 RPM. It's perfect for a wide range of signage materials. The air-cooled milling bit assures edge quality during high-speed milling of acrylics and other synthetics. The switch-operated bit exchange eliminates the need for hand tools.

The camera system and innovative front-end software make it the perfect entry level solution for signage production.



# Producing on a wide range of materials

In a world that comes with rapid technology and business changes, it is important to invest in equipment is ready for any challenges that come your way. Choose a cutting table that handles the widest range of materials and applications.



**Folding carton**  
Samples from all grades of folding carton.  
Powerful function to generate sample counters based on integration with ArtiosCAD



**Corrugated board**  
Short-run of boxes on demand  
Sample boxes  
POP displays  
Wooden box replacements



**Solid Board**  
Specialty packaging  
gift packaging



**ACM\***  
Displays  
Advertising items  
Signs  
Boxes



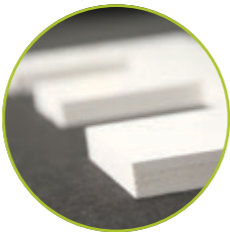
**Acrylic**  
Engraving  
Additional furniture  
Trophy  
Sign making  
Front panels



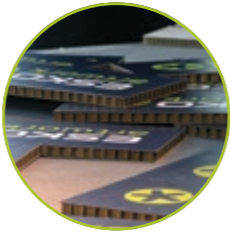
**Adhesives/Vinyls**  
Labels (Short runs)  
Vinyls for banners, cars, shops  
Sign making



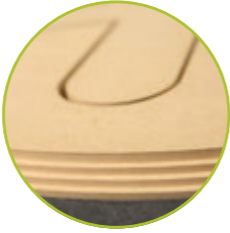
**Fluted Core Board**  
Furniture  
POP displays



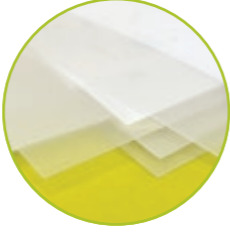
**Foam board**  
Signs and posters  
Display  
Models of buildings...



**Honeycomb**  
Pallets  
Displays  
Protective packaging



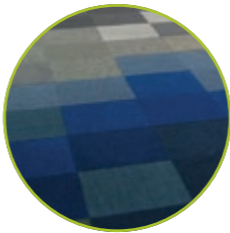
**MDF\*\***  
Displays  
Furniture  
Sign & Display



**Plastics**  
Boxes for presents and cosmetics  
Document folders  
Rain covers and sun shading  
Credit cards  
Lights boxes/Pop up



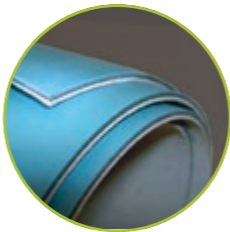
**Corrugated plastic**  
Boxes  
Displays



**Carpet**  
Carpets with different forms or logos  
combining colors  
Personalized shapes



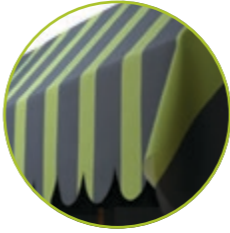
**Paper**  
Envelopes  
Exhibitors lining  
Box lining



**Varnish blankets**  
Optional register bar for pin registered blankets, ensuring perfect match with printing press.



**Flexo plates**  
Cut the flexo plates with or without bevel  
Staggered cut



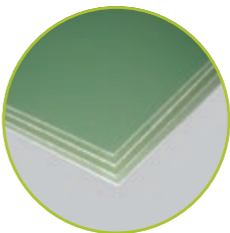
**Textile**  
Banners  
Flags  
Advertising items  
Roll-up



**Gaskets**  
Gaskets for cars, pumps, liquids...



**Wood**  
Displays  
Furniture  
Sign & Display



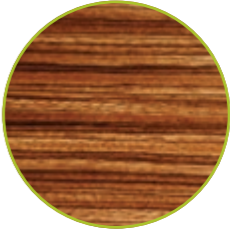
**Fiberglass**  
Sign  
Special constructions  
Modelling



**Thin aluminium**  
Displays  
Signmaking



**Rubber**  
Die rubber (no drying time required)  
Mouse mats  
Complements for shoes  
Magnetic foil



**Veneer**  
Furniture  
Signmaking  
Box lining



**Other Materials**  
Please contact us for performance test

\*aluminum composite material  
\*\*medium-density fiberboard

		V20		V24	
Kongsberg V for Packaging					
Work Area, all tools	mm In.	1680 66	1270 50	1680 66	3050 120
Max. material size	mm In.	1750 69	1620 64	1750 69	3420 135
Kongsberg V for Sign and Display					
Work Area, all tools	mm In.	1618 63,7	1270 50	1618 63,7	3050 120
Max. material size	mm In.	1750 69	1620 64	1750 69	3420 135
Overall dimensions w/ front panel	mm In.	2250 89	1980 78	2250 89	3720 146
Weight	kg lbs	405kg 890lbs		580kg 1276lbs	
Position accuracy*		+-200 um +-,.0078"		+-200 um +-,.0078"	
Repeatability		+-50um +-,.0019"		+-50um +-,.0019"	
Max. speed		30m/min 20 IPS			
Max. acceleration		0,3G			
Vertical tool force		220 N			
No. of vacuum sections		1		1	
Standard traverse clearance**		50mm 2"			
Operator safety		Included is the DynaGuard Safety System, which protects the operator and bystanders from potential machine hazards. The movable parts of the machine (traverse, carriage) are surrounded by a set of photocell sensors that, if activated, will immediately stop the machine and wait for the operator to resume operation. If the end of the traverse hits a bystander the photocell beam goes out of position and operation is stopped.			
*Applies across total work area.					
**Measured without cutting underlay. Max. cutting thickness is tool dependent.					

**Esko**  
Kortrijksesteenweg 1095  
9051 Gent  
Belgium  
Tel. +32 9 216 92 11  
info.eur@esko.com

**Esko**  
8535 Gander Creek Dr.  
Miamisburg, Ohio 45342  
USA  
Tel. +1 937 454 1721  
info.usa@esko.com

**Esko**  
8 Changi Business Park Ave 1  
UE BizHub East #07-51  
South Tower Singapore 486018  
Rep. of Singapore  
Tel.: +65 6420 0399  
info.asp@esko.com

**Esko**  
Shinjuku i-Land Tower 7F  
6-5-1 Nishi-Shinjuku,  
Shinjuku-ku, Tokyo 163-1307  
Japan  
Tel +81(3) 5909 7631  
info.japan@esko.com

**Esko**  
Floor 1, #2 Building,  
1528 Gu Mei Road  
200233 Shanghai  
China  
Tel. +86 21 60576565  
info.china@esko.com