

# Acorta

**Solid, versatile automatic cutting plotter  
with auto recognition**

Acorta strengthens your wide-format offering by adding an additional in-house production step. The cutter's price, productivity and quality are unique and it fits in perfectly with Agfa Graphics' Jeti and Anapurna wide-format inkjet printers, as well as with the dedicated wide-format workflow software Asanti. This integrated solution approach guarantees higher productivity and therefore a higher return on investment.

**AGFA** 

STAY AHEAD. WITH AGFA GRAPHICS.

# Acorta

Acorta with auto recognition system. Simplicity at a glance.



Acorta cut-out model

Acorta is an automatic cutting and finishing plotter dedicated to respond to the requirements of the cardboard, digital printing and signage industries. It helps sign and display companies turn a wide variety of rigid and flexible sheet media into POP/POS materials, decoration, containers, banners etc. in a way that will make you truly stand out.

The Acorta uses an innovative auto recognition system to automatically recognize the printed images and reference points. The flexible finishing system reduces costs whilst offering maximum versatility for both short and complex production runs. The unparalleled cutting speeds of up to 102 m/min increase your productivity, with maximum automation of the production process and minimum operator intervention.



Acorta engine in action

## KEY BENEFITS

- Integrated automatic recognition of printed images and reference points
- Working surface made up of 40 individual vacuum sectors activated automatically as necessary
- Solid cellular steel structure to assure correct cutting and milling without vibration or bending
- Multi-tool cutting head for cutting, creasing and milling materials up to 50 mm thick
- Multi-batch cutting possible to cut diverse substrates simultaneously
- Automatic tool pre-setting
- Video projection system to optimize material yield
- Cutting speed up to 102 m/min, acceleration 1.4 G
- Auto-height recognition of substrates



## **:Acorta. For a higher productivity.**

### **Automatic recognition.** Visible innovation.

Thanks to the innovative detection system, you can simply position the sheet freely on the working area, without any restrictions. A camera recognizes the printed images and loads the relative cutting files and identifies the position of the reference points – completely automatically. A simple click is all it takes to start cutting.

### **Multi-tool cutting head.** Versatility is key.

Every job requires a dedicated tool. The multi-tool head can fit different tools for different materials. It is possible to work different materials simultaneously thanks to the vast selection of flexible functions.

### **Speed.** Cut your working times.

With cutting speeds of up to 102 m/min, the Acorta's performance is unique. In addition, it is easy to use and flexible with fewer delays during production, lower labor costs and faster completion of individual jobs. In short, it delivers greater profitability for your business.

## **:Acorta. For the greatest accuracy.**

### **Machine structure.** Robust build.

Solid steel structure incorporating linear and curved elements. The notably robust structure facilitates the high-quality production and working speeds.

### **40 vacuum sectors.** Maximum stability.

Solid cellular steel structure. Up to 40 concentrated vacuum sectors are automatically activated where necessary in order to ensure maximum stability of materials.

### **Rack work.** Clean cut.

The rack work ensures an exact positioning of the knives and thus the highest possible accuracy when e.g. cutting corners.

## **THE PRODUCTION PROCESS IN 6 EASY STEPS**

- 1. The Asanti workflow software drives the wide-format printer and the Acorta.**
- 2. Freely position the sheet on the work surface without any restrictions.**
- 3. The auto recognition system detects the sheet position, identifies the images, loads the cutting files, and projects the image onto the substrate.**
- 4. The correct tool is automatically selected.**
- 5. Acorta starts the finishing process.**
- 6. Collect the finished product.**





## **Acorta.** For convenience of use.

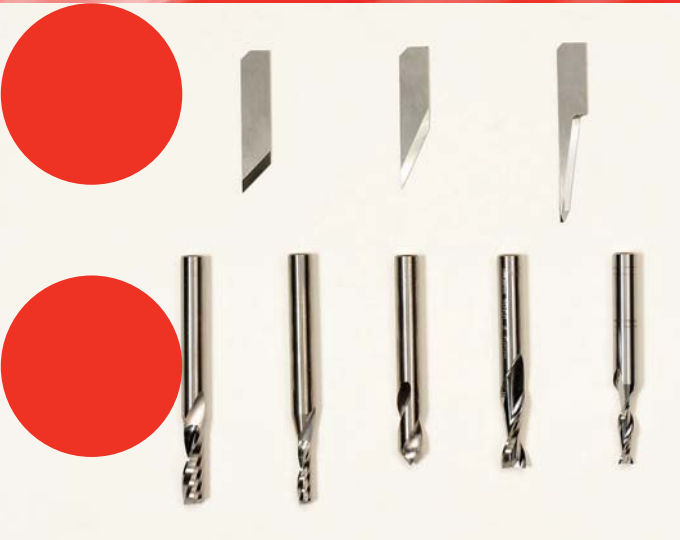
### **Asanti workflow.** Integration solution.

The Acorta cutter is fully powered by Agfa Graphics' wide-format workflow software solution Asanti, which operates as the beating heart of your wide-format printing production.

### **Video projection.** Avoiding errors.

The powerful bright high-resolution video projection system clearly projects the printed image and cutting shapes onto the sheet. This makes an easy check possible and avoids making errors.





## Tools. A versatile head.

Acorta comes with a complete range of tools with an automatic pre-setting system, easy to configure depending on the material to be worked. This versatility makes it possible to cut, mill and crease different materials and applications.

### Default set

- Cutting head with fixed or oscillating knife
  - electric and/or pneumatic
- Electro-spindle milling module
- Creasing wheels, with diameters up to 100 mm
- Peeling module (kiss cutting)
- 45° knife (other cutting angles also available)
- Pen module
- Laser pointer

### Options

Wide variety of tools available for specific cutting work:

- Different cutting angles
- Adapted mills, knives and creasing tools



## Materials. Flexibility to support you.

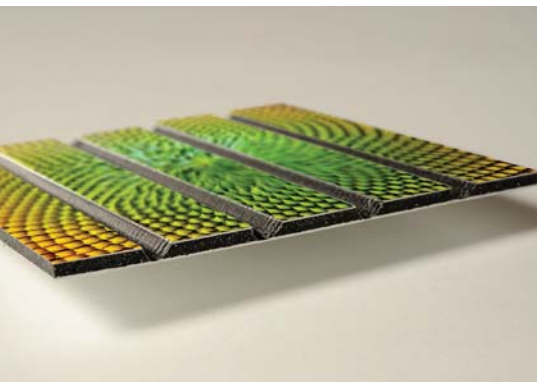
Acorta is able to cut a wide variety of materials, finishing each shape with extreme precision.

- Forex
  - Dibond
  - PVC
  - Plastics
  - Films
  - Re-board
  - Card and cardboard boxes
  - Corrugated cardboard
  - Foam, up to 50 mm in height
- ... and many more.

## Applications. Material takes shape.

No limits to your productivity. Thanks to Acorta's extraordinary flexibility you can now meet even the most diverse requirements of your customers.

- Packaging
  - POS displays
  - Transparent containers
  - Advertising banners
  - Folders and binders
  - Boxes
  - Promotional trade fair stand panels
  - Promotional flags
  - Brochure holders
- ... and many more.





TECHNICAL INFORMATION	Acorta HS 3120	Acorta HS 1616
Working area (mm)	3100 X 2000	2000 X 1600
Suction sectors on working area	40	20
Machine dimensions (mm)	4700 x 3250	2850 x 2850
Machine height (mm)	3400	3150
Working area height (mm)	900	900
Weight (kg)	3000	2000
Electric power supply	N400V Y / 50Hz / 11KW N400V Y / 60Hz / 13KW	N400V Y / 50Hz / 11KW N400V Y / 60Hz / 13KW
Pneumatic power supply	8 bar 600l/min	8 bar 600l/min