

## High-speed performance, remarkable image quality

How fast can you print without sacrificing quality? Meet the SOLJET PRO 4 XF-640, Roland DG's fastest printer ever. Featuring the industry's latest print head technology, the XF-640 delivers exceptional image quality at the highest speeds.

Durable construction and advanced media handling systems stabilize every movement of the printer for flawless imaging. Powerful RIP software automates the workflow for easy operation and reliable results. With the XF-640, the ultimate in performance and precision come together in one ironclad production platform, a great profit center for your business.

**SOLJET PRO4 XF-640**  
4 Colors



Photo: XF-640 with optional heater and blower



Specifications		
Printing technology	Piezoelectric inkjet	
Media	Width	259 to 1,625 mm [10.2 to 64 in.]
	Thickness	Maximum 1.0 mm (39 mil) with liner
	Roll outer diameter	Maximum 210 mm (8.3 in.)
	Roll weight	Maximum 40 kg (88 lb.)
	Core diameter*1	76.2 mm (3 in.) or 50.8 mm (2 in.)
Printing width*2	Maximum 1,615 mm (63.6 in.)	
Ink cartridges	Types	Roland ECO-SOL MAX 2 440-cc cartridge
	Colors	Four colors (cyan, magenta, yellow, and black)
Printing resolution (dots per inch)	Maximum 1,440 dpi	
Distance accuracy*3	Error of less than ±0.3 % of distance traveled, or ±0.3 mm, whichever is greater	
Media heating system*4	Print heater and preheater, setting range for the preset temperature: 30 to 45°C (86 to 112°F) Dryer, setting range for the preset temperature: 30 to 55°C (86 to 131°F)	
Connectivity	Ethernet (10BASE-T/100BASE-TX, automatic switching)	
Power-saving function	Automatic sleep feature	
Power requirements	AC 100 to 120 V ±10%, 11 A, 50/60 Hz or AC 220 to 240 V ±10%, 6 A, 50/60 Hz	
Power Consumption	During operation	Approx. 1350 W
	Sleep mode	Approx. 20 W
Acoustic noise level	During operation	62 dB (A) or less
	During standby	45 dB (A) or less
Dimensions (with stand)	2,750(W) x 800(D) x 1,295 (H) mm [108 (W) x 31 (D) x 50 (H) in.]	
Weight (with stand)	177 kg (390 lb.)	
Environmental	Power on	Temperature: 15 to 32°C (59 to 90°F) [20°C (68°F) or more recommended], humidity: 35 to 80%RH (non-condensing)
	Power off	Temperature: 5 to 40°C (41 to 104°F), humidity: 20 to 80%RH (non-condensing)
Included items	Exclusive stands, power cord, media clamps, media holder, replacement blade for separating knife, software RIP, User's Manual, etc.	



Ink		
Model	Description	
ECO-SOL MAX 2 Ink	ESL4-4CY	Cyan, 440cc
	ESL4-4MG	Magenta, 440cc
	ESL4-4YE	Yellow, 440cc
	ESL4-4BK	Black, 440cc
Cleaning liquid	ESL4-CL 1pc.	

Roland VersaWorks System Requirements	
Operating system	Windows® 10 (32/64-bit) Windows® 8/8.1 (32/64-bit) Windows® 7 Professional or Ultimate (32/64-bit)
CPU	Intel® Core™2 Duo, 2.0 GHz or faster recommended
RAM	2 GB or more recommended
Video card and monitor	A resolution of 1,280 x 1,024 or more recommended
Free hard-disk space	40 GB or more recommended
Hard-disk file system	NTFS format
Optical drive	DVD-ROM drive

\*Roland VersaWorks is a 32-bit application, which runs on 64-bit Windows® with WoW64 (Windows 32-bit on Windows 64-bit). \*Windows® RT is excluded.

\*1 The media holder for this machine is exclusively designed for media rolls with a paper tube measuring 3 inches in diameter. To use 2-inch media rolls, the optional media flanges are required. \*2 The length of the production run is subject to the limitations of the software program. \*3 \*Media type: Media specified by Roland DG Corporation. \*Temperature: 25°C (77°F), humidity: 50%. \*Roll media must be loaded correctly. \*Excluding expansion/contraction of the media. \*Not assured when the pre-heater, print heater or dryer is used. \*All correction or adjustment functions of this machine have been made properly. \*Print travel: 1 m \*4 \*Warm up is required after power up. This may require 5 to 20 minutes, depending on the operating environment. \*Depending on the ambient temperature and media width, the preset temperature may not be reached.

Optional heater and blower	
<p><b>DU2-64</b></p> <p>To further increase your productivity, we recommend our optional heater and blower unit. The new, redesigned heater delivers even temperature distribution across large graphics and dries ink saturated prints quickly during high-speed production. Plus, the optional heater and blower can be installed right on the printer to conserve space in your shop.</p>	

Optional DU2-64 heater and blower specifications		
Dryer unit	Heating type (with blower fan), setting range for the preset temperature: 30 to 55°C (86 to 130°F)*1	
Power requirements*2	AC 100 to 120V ±10%, 5.5 A, 50/60 Hz or AC 220 to 240 V ±10%, 3 A, 50/60 Hz	
Power consumption	Approx. 750 W	
Weight	26 kg (57 lb.)	
Environmental	Power on	Temperature: 15 to 32°C (59 to 90°F)—[20°C (68°F) or more recommended], humidity: 35 to 80% (non-condensing)
	Power off	Temperature: 5 to 40°C (41 to 104°F), humidity: 20 to 80% (non-condensing)
Included items	Power cord, arms, bushing, cable clamps, stays, hexagonal wrench, bolts, washers, User's Manual	

\*1 \*Warm up is required after powerup. This may require 5 to 20 minutes, depending on the operating environment. \*Depending on the ambient temperature and media width, the preset temperature may fail to be reached. \*2 \*Be sure to connect the machine to an unshared electrical circuit. \*Be sure to verify the amperage of the circuit breaker or fuse used.

Roland DG reserves the right to make changes in specifications, materials or accessories without notice. Your actual output may vary. For optimum output quality, periodic maintenance to critical components may be required. Please contact your Roland DG dealer for details. No guarantee or warranty is implied other than expressly stated. Roland DG shall not be liable for any incidental or consequential damages, whether foreseeable or not, caused by defects in such products. Adobe, PostScript, PostScript 3 and the PostScript logo are trademarks of Adobe Systems Incorporated. PANTONE® is the property of Pantone LLC. All other trademarks are the property of their respective owners. Reproduction or use of copyrighted material is governed by local, national, and international laws. Customers are responsible for observing all applicable laws and are liable for any infringement. Roland DG Corporation has licensed the MMP technology from the TPL Group.

Imagine. Roland

AUTHORIZED DEALER:

Printed in Japan. RDG-416096399 15 SEP D-X

[www.rolanddg.com](http://www.rolanddg.com)

Roland

DVE  
Digital Value Engineering

**PRO4**  
SOLJET PRO4 XF-640

# RED MONSTER

## SPEED & QUALITY | Exceptional imaging for the most demanding production environments

### Staggered head configuration accelerates production

The XF-640 features dual print heads that are based on the industry's most advanced inkjet technology and positioned in a staggered formation to maximize your productivity. This unique design allows the XF-640 to achieve a maximum speed of 102m<sup>2</sup>/h for banner printing, two and a half times the speed of the previous model.\* To capture every nuance in your design, each head fires precise droplets in seven different sizes. From signs and banners to vehicle graphics, POP and wraps of all kinds, the XF-640 delivers exceptional results throughout the longest production runs. \*SOLJET PRO III XJ-640



Staggered head configuration

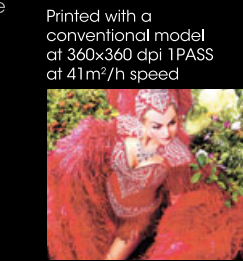
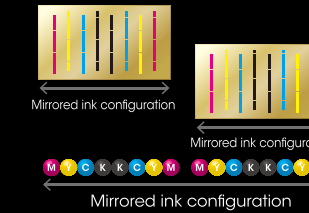
XF-640 throughput for banner	
Max Speed (360x360/1PASS)	102 m <sup>2</sup> /h
Billboard (540x360/2PASS)	63 m <sup>2</sup> /h
High Speed (540x360/4PASS)	31 m <sup>2</sup> /h
Standard (720x720/5PASS)	24 m <sup>2</sup> /h
High Quality (720x1440/9PASS)	13 m <sup>2</sup> /h

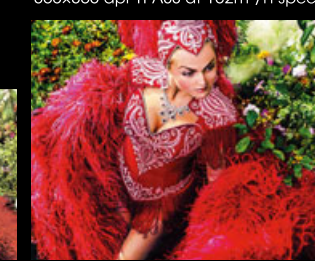
XF-640 throughput for vinyl	
High Speed (360x720/4PASS)	30 m <sup>2</sup> /h
Standard (720x720/6PASS)	20 m <sup>2</sup> /h
High Quality (720x1440/12PASS)	10 m <sup>2</sup> /h
Artistic (1440x1440/16PASS)	4 m <sup>2</sup> /h

### Dual CMYK mirrored print heads image beautifully in high-speed mode

To make high-speed printing more accessible, the XF-640 delivers superior image quality and high density coverage even at top speed. The mirrored CMYK ink configuration applies the ink in the same order across both passes for even color reproduction, virtually free of banding.



Printed with a conventional model at 360x360 dpi 1PASS at 41m<sup>2</sup>/h speed



Printed with the SOLJET PRO 4 XF-640 at 360x360 dpi 1PASS at 102m<sup>2</sup>/h speed

### High-density ECO-SOL MAX 2 ink ensures vivid color reproduction

Based on award winning Roland DG ink technology, ECO-SOL MAX 2 is our newest and most advanced eco-solvent formulation to date. ECO-SOL MAX 2 ink adheres strongly to a variety of coated and uncoated media for rich, saturated colors and sharp images. Formulated to dry quickly, ECO-SOL MAX 2 offers outstanding long-term outdoor durability, scratch and chemical resistance and a wide color gamut – all without any nickel compounds.

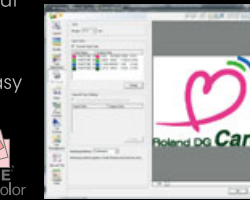


ECO-SOL MAX 2

## Roland VersaWorks RIP & PRINT MANAGEMENT SOFTWARE

### Roland VersaWorks RIP software supports the applications driving your business

A complete solution, the XF-640 comes with Roland VersaWorks RIP and print management software, which allows you to fully customize printer settings to enhance the job at hand. For example, you can increase the vividness of colors for high-impact outdoor signage, or bring out every subtle detail in fine art or photographic reproductions for stunning results. VersaWorks features built-in PANTONE® libraries that make it easy to match spot colors and reproduce them accurately. A predictive ink calculator estimates the ink usage and print time for each job so you can plan accordingly.



PANTONE Digital Color



## ARCHITECTURE | Durable construction ensures reliable results

### New rock-solid rail and frame support precise color imaging

The XF-640 is built to last, with a powerful AC servo motor designed for volume production. Its reinforced rail and frame structure provides a firm foundation for smooth operation and outstanding image quality in high-speed mode. For added precision, the XF-640 features 16 pinch rollers and redesigned grit rollers which hold media securely in place, preventing any signs of distortion.



New media feed system includes 16 pinch rollers for letter perfect printing during high-volume runs

### Redesigned take-up system handles volume production

With the XF-640, we have redesigned the take-up system for high speed, volume production. Two rigid shafts hold heavy rolls reliably in place for flawless media feeding. A new dancer roller assembly applies just the right level of tension to move media precisely through the printer. An all-new optional heater and blower unit ensures even temperature distribution across the entire width of the media, for prints that dry quickly at high speed.



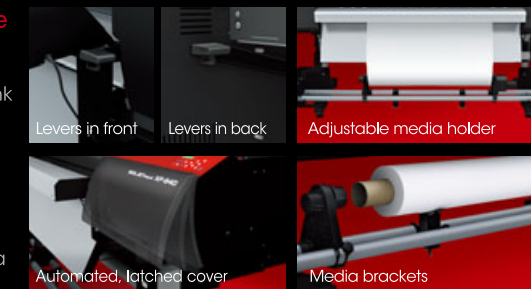
New take-up system

Optional new heater and blower

## EASE OF USE | Intelligent design and automated features for easy operation

### A host of advanced features make set up and maintenance a breeze

Like the rest of the Roland DG printer line, the XF-640 is easy to set up and operate. A redesigned front-loading ink cartridge unit facilitates ink replacement while minimizing the functional printer footprint. A latched maintenance cover protects the print head assembly and opens automatically at the touch of a button for cleaning. With the XF-640, media loading levers are positioned in both the front and back for maximum convenience. Special media brackets support even the heaviest media rolls as they are loaded into place, and adjustable media holders on both sides of the take-up system support the narrowest of rolls.



Levers in front

Levers in back

Adjustable media holder

Automated, latched cover

Media brackets