



# :ANAPURNA M2050

**Top quality wide format inkjet printing at PEAK PERFORMANCE for indoor and outdoor applications... with a white ink touch.**

:Anapurna M2050 is a high-speed UV curable inkjet system suitable for graphic screen printers, photo shops and sign shops. White ink is ideal to print on coloured or dark substrates. The white ink function creates new possibilities for printing on transparent material for backlit applications or printing white as a spot colour.

Top class productivity is ensured with print output at 53 m<sup>2</sup>/hr. There is no mounting, no waiting, and no remakes. This printer uses :Anapurna UV inks for faster drying, material versatility and a wider colour gamut. And it also prints cleaner than similar technologies.

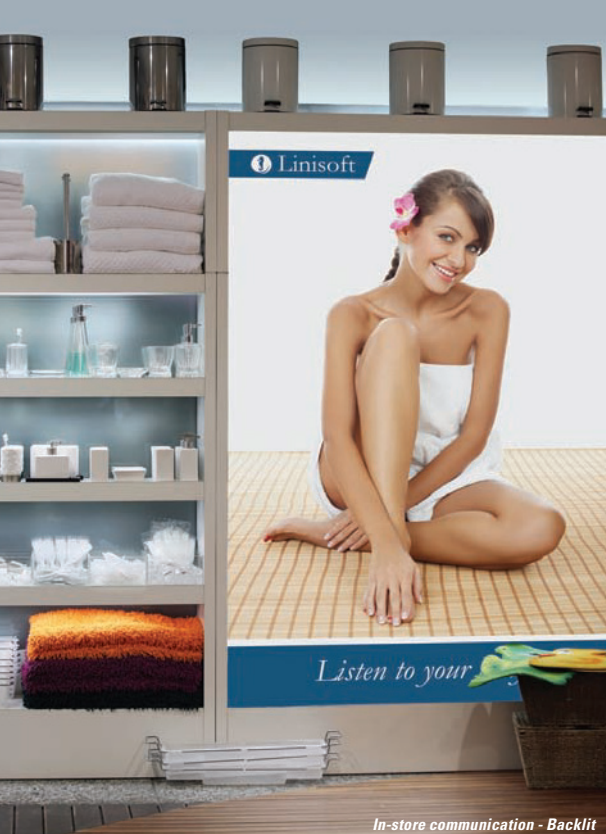
:Anapurna M2050 will make your wide format print-work more exciting. Your inkjet prints will grab your audience's attention with that extra touch of white.

**Distributed by Spandex. [www.spandex.com](http://www.spandex.com)**

**SPANDEX Group**, Excelsiorlaan 55, B-1930 Zaventem  
Tel. 02 725 73 70 | Fax 02 720 76 40 | [www.spandex.com](http://www.spandex.com)



Leading Brands  
for Graphic Solutions



In-store communication - Backlit



In-house decoration - Dibond



Outdoor communication - Banner



In-house decoration - Essense paper

**Top quality WIDE FORMAT inkjet printing at peak performance for indoor and outdoor applications.**

Anapurna M2050 is a heavy-duty, turnkey and complete industrial UV inkjet system, designed to produce top quality wide format output in any 'print for pay' industry environment, on a wide range of rigid and roll-to-roll media. All necessary components including ring-blowers, shuttle safety sensors, media transport and roll up systems which make the :Anapurna M2050 a guarantee for peak production are incorporated in the robustly engineered industrial inkjet design.

**Speed is key.**

Measured at optimum print shuttle speed, the system is capable of producing in express mode at 53 m<sup>2</sup>/h. At that speed you will be able to maintain a high print production on all your substrates, satisfying your most demanding customers. Enhanced productivity will also enable you to handle more jobs making it possible to expand your customer database.

**White is beautiful.**

The :Anapurna M2050 has a white printing function. White ink is ideal to print on coloured or dark substrates. The white ink function creates new possibilities for printing on transparent material for backlit or backlit/frontlit applications or printing white as a spot colour. It can even be used as a spot colour to bring in to focus certain parts of an image. You might even consider printing images on dark substrates using white ink only.

Stand out and let :Anapurna M2050 differentiate your decoration and communication jobs.

**:Anapurna M2050 white is reliable.**

On Agfa Graphics' :Anapurna M2050 engines, white printing is reliable and doesn't harm productivity.

Agfa Graphics has seen to it that the :Anapurna M2050 has a fully separated white ink management system on board. The M2050 has a separate circulation system, a separate under-pressure-regulation and a separate cleaning circuit. Moreover the white ink tank is equipped with a stirring mechanism to keep the ink properly mixed at all times.

The :Anapurna M2050 has the possibility to run pre- or post-white in one production run, expanding the application possibilities a great deal.

**:Anapurna M2050 in a nutshell**

- CMYK + LcLm + White
- Pre- and post white
- Speeds up to 53 m<sup>2</sup>/hr.
- Max. print size
  - Up to 2.05 x 3.2m on rigids
  - Up to 2.05m on wide roll substrates
- Substrates up to 4,5 cm (1.77 in) thick.
- Enhanced operator control panel
- Multiple board printing
- Borderless printing
- Shuttle safety sensors
- For Digital Printers, Photo Shops, Poster Printers and Mid-Size Graphic Screen Printers



**Print quality. And it shows!**

The six 12 picolitre heads guarantee printing of good solids, fine text reproduction of up to 6 pt, good tonal rendering and low ink consumption.

Next to the 8 (CMYK Lc Lm, 2 x white) print heads this system features a robust and industrial engineered concept, fit for sustained higher work loads.

The 1024 nozzles produce top quality prints at 720 x 1440 dpi on uncoated rigid media, such as corrugated boards, rigid plastics, exhibition panels, stage graphics and advertising panels of up to 4,5 cm thick, as well as roll media such as film, vinyl and paper, canvas and banners.

**Automation for an easy life.**

:Anapurna M2050's automatic vacuum system delivers an equal vacuum throughout the whole printing process, whether printing roll or rigid materials. This ensures flawless media transport, giving accurate print results at all times! The ring-blower driving the vacuum system is built-in in the printer, reducing the noise to a minimum for even more user convenience.

:Anapurna M2050 incorporates a set of shuttle safety sensors to prevent printheads from touching the substrate. This will avoid any possible damage to print-heads. Media loading is very straightforward with automated features such as the media registration bar and head height adjustment. Multiple board or borderless printing maximises the productivity. Two ionizer bars on the shuttle see to it that there are no electro-static loads on the substrate, ensuring optimum ink droplet control and therefore delivering the highest print quality.

**Ink to print.**

The "Agfa-made" :Anapurna UV-curable inks provide a large colour gamut, high colour vibrancy and, thanks to good ink adhesion, high image longevity and outdoor resistance. Maintenance of the :Anapurna M2050 is easy and during production the ink levels are monitored by the automatic ink refill system.

:Anapurna inks allow instant curing, making prints ready to handle immediately after leaving the engine.

**Anything goes!**

Switching between rigid and roll media is instant. Therefore :Anapurna M2050 delivers exceptional print quality on a wide variety of indoor and outdoor media on uncoated rigid media, such as corrugated boards, rigid plastics, exhibition panels, stage graphics and advertising panels up to 4,5 cm thick, as well as roll media such as film, vinyl and paper, canvas and banners.

**Possibilities galore!**

Thanks to its high application versatility (e.g. Displays, Posters, POP, In-house decoration, CD covers, beer coasters, party gadgets ...) and affordable capital investment, :Anapurna M2050 is the ideal UV - printer for the Sign, Photo and Graphic Screen printing industry.

## :ANAPURNA M2050

### POSITIONING

- Perfect fit for Digital Printers, Photo shops and Mid-Size Graphic Screen printers
- Heavy-duty, turnkey and complete industrial UV inkjet system
- Excellent solids and signs in 8 pass printing

### DESIGN CONCEPT

- Robust Engineered - Professional - Hybrid UV Wide Format Printer
- Includes all necessary components like the vacuum ring-blower, shuttle safety sensors, media transport and roll up systems for guaranteed peak production

### ENGINE FEATURES

- Reinforced beam
- Automated Media Positioning bar mounted on table - registration of rigids
- Divided vacuum table, 4 parts
- 1,5 kW ring blower for strong vacuum situated in the engine for less noise
- Accurate Media transport/feed
- Powerfull fastcan motor
- Automatic control of vacuum strength (inverter based)
- Ionisation bar mounted on each side of carriage to remove electrostatic load on media
- Shuttle safety sensors on each side of the carriage
- Extended basic frame, to support ring blower
- Black coloured media transport belt
- Network and USB (2) connection
- On-board controller with touchscreen

### APPLICATIONS

- Banners, Posters, Exhibition graphics, POP, Mock-ups, Backlit, Frontlit, Self adhesives (Labels)
- Niche application: DVD printing, wood, Art reproductions, personalised object printing (mouse mats), ...
- Party gadgets (beer coasters, ...)
- Architectural and Interior decoration, Ceramics printing

### SUBSTRATE FLEXIBILITY

- Up to 207 cm media width
- Up to 205 cm print width
- Borderless printing  
Up to 199 cm media width
- Dual board printing  
Min.size: A2, landscape
- Media thickness up to 45 mm
- Media weight up to 10 kg/m<sup>2</sup>
- 2 tables + 2 extension tables.  
Max length 3 m
- Roll-to-Roll  
Max. roll weight: 50 kg  
Max. roll diameter: 36 cm

### COLOR GAMUT

- Capable of reproducing ISO 12647 in Poster (4pass Double Strike) and Photo (8 pass)



### TEXT QUALITY

- Positive: 4 point
- Negative: 6 point

### IMAGE QUALITY

- 4 pass bi-directional: poster quality mode for images and text.
- 8 pass uni-directional: photo highest quality mode for vector, signs, solids, images and text
- Uniform gloss
- Express Mode  
Fastest printing mode for draft & layout jobs.  
53 m<sup>2</sup>/h    575 sqf/h
- Production Mode  
High productivity at an acceptable quality level.  
32 m<sup>2</sup>/h    344 sqf/h
- Poster Mode  
Best balance between speed & quality.  
18 m<sup>2</sup>/h    193 sqf/h
- Photo Mode  
For that extra bit of quality.  
9 m<sup>2</sup>/h    96 sqf/h

### BORDERLESS PRINTING AND MULTIPLE BOARD PRINTING

### INKS

7 :Anapurna M G2 UV curable inks (CMYKLCm and White)

### HEADS

- 6 Konica-Minolta: 1024 nozzles/head with a droplet volume of 12pl (colours)
- 2 Konica-Minolta: 42pl (white in line)

### ENGINE DIMENSIONS

4350 (W) x 1600 (H) x 1470 (D) mm

### WEIGHT

1800 KG

### ELECTRICITY

- 380V - 415 V 3-phase star connection with Neutral wire (3x 30A\*)
- 208V - 240V 3-phase delta connection without Neutral wire (3x 30A\*)

### SYSTEM INTEGRATION

#### RIP

- Wasatch SoftRIP Agfa Edition
- Ready to use :Anapurna M2050 media/ink profiles available